

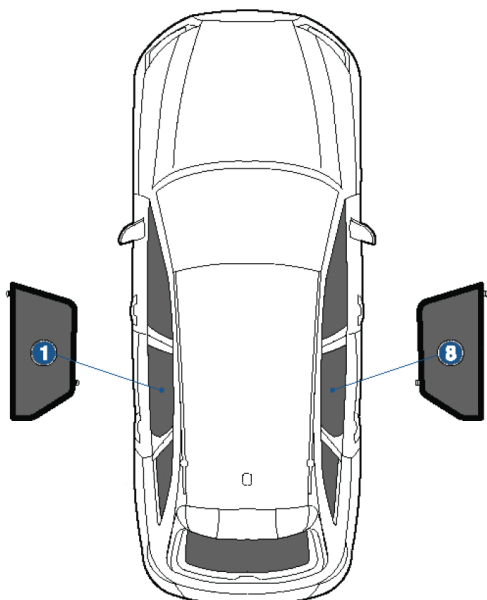
# Installation Manual

AUDI A4 EST  
AU-A4-E-C-18



## COMPONENTS INCLUDED

## SHADES



1+8

## FIXING CLIPS



CL-M02 x 6



CL-M13 x 2

**CAR**  
SHADES

# Side Shade Installation

AUDI A4 EST  
AU-A4-E-C-18

COMPONENTS NEEDED:



CL-M02 x 6



CL-M13 x 2

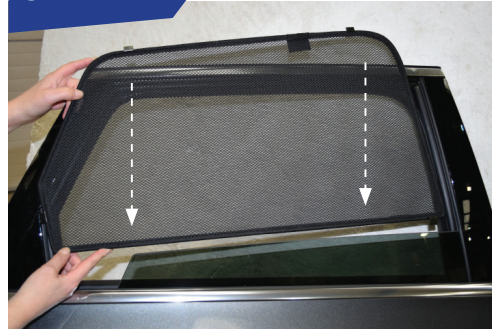
## STEP #1

ATTACH CLIPS ON SHADE EDGES



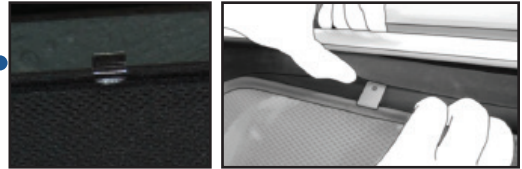
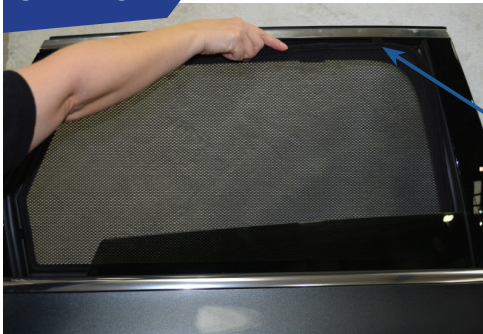
## STEP #2

POSITION THE SIDE SHADE



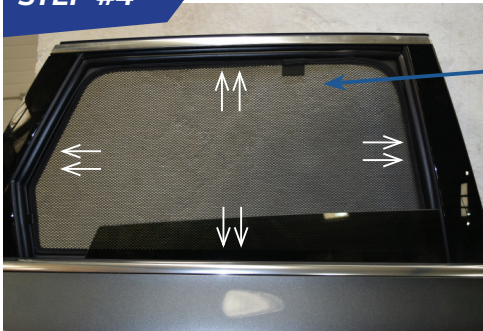
## STEP #3

INSERT CLIPS INSIDE WEATHERSTRIP



## STEP #4

ENSURE SECURELY FITTED IN PLACE



**CAR**  
SHADES